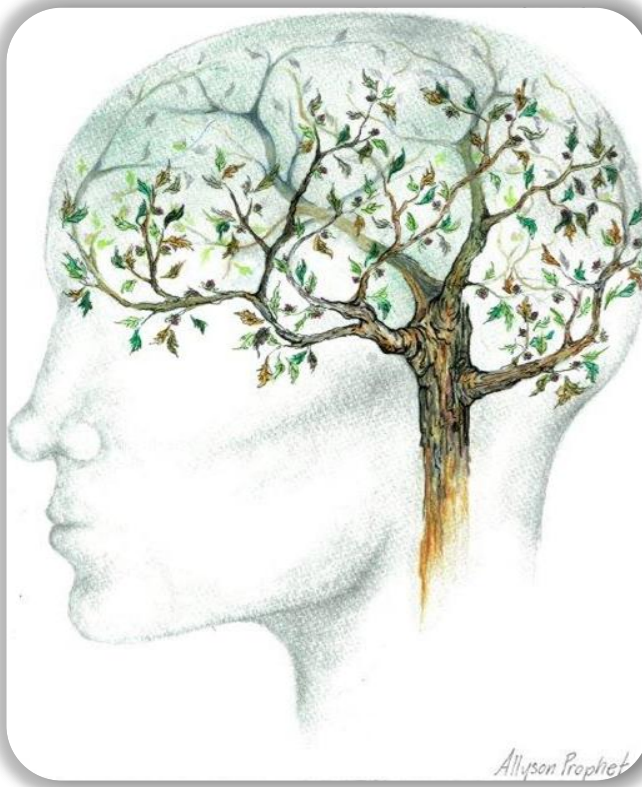




# How does HIV affect your brain?



If you are interested in helping us find out how HIV affects the brain and everyday life please participate in this study!

No special requirements, just your time, 5 times over 27 months.

Ask clinic staff for details!

 <http://brainhealthnow.mcgill.ca>

 @pozbn

**Tsubasa Kozai**  
Research Coordinator (Brain Health Now)  
604-682-2344 x62468  
tkozai@cfenet.ubc.ca

**Tsubasa Kozai**  
Research Coordinator (Brain Health Now)  
604-682-2344 x62468  
tkozai@cfenet.ubc.ca

**Tsubasa Kozai**  
Research Coordinator (Brain Health Now)  
604-682-2344 x62468  
tkozai@cfenet.ubc.ca

**Tsubasa Kozai**  
Research Coordinator (Brain Health Now)  
604-682-2344 x62468  
tkozai@cfenet.ubc.ca

**Tsubasa Kozai**  
Research Coordinator (Brain Health Now)  
604-682-2344 x62468  
tkozai@cfenet.ubc.ca

**Tsubasa Kozai**  
Research Coordinator (Brain Health Now)  
604-682-2344 x62468  
tkozai@cfenet.ubc.ca

**Tsubasa Kozai**  
Research Coordinator (Brain Health Now)  
604-682-2344 x62468  
tkozai@cfenet.ubc.ca

**Tsubasa Kozai**  
Research Coordinator (Brain Health Now)  
604-682-2344 x62468  
tkozai@cfenet.ubc.ca

**Tsubasa Kozai**  
Research Coordinator (Brain Health Now)  
604-682-2344 x62468  
tkozai@cfenet.ubc.ca