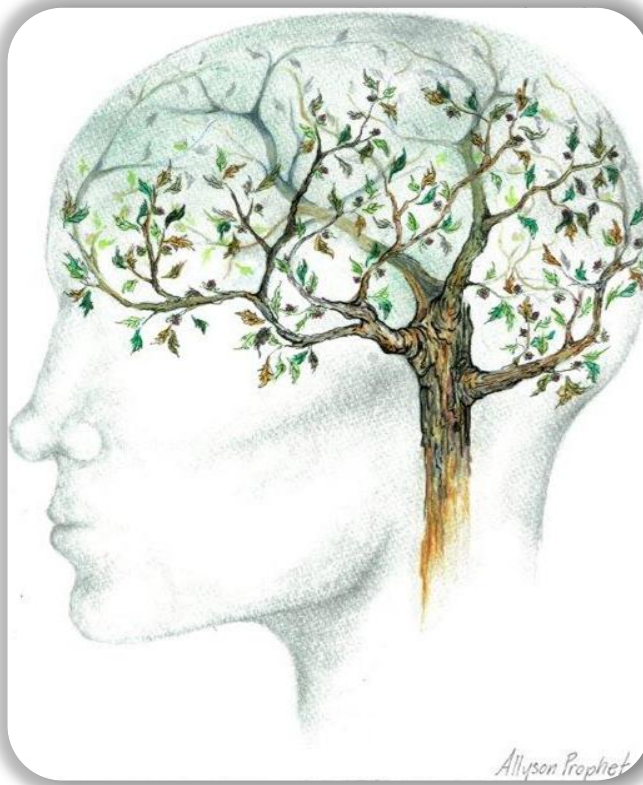




How does HIV affect your brain?



If you are interested in helping us find out how HIV affects the brain and everyday life please participate in this study!

No special requirements, just your time, 5 times over 27 months.

Ask Laurence Desjardins for details!

 <http://brainhealthnow.mcgill.ca>

 @pozdbhn

Laurence Desjardins
Research Coordinator (Brain Health Now)
(514)-524-3642 x273
Laurence.Desjardins@lactuel.ca

Laurence Desjardins
Research Coordinator (Brain Health Now)
(514)-524-3642 x273
Laurence.Desjardins@lactuel.ca

Laurence Desjardins
Research Coordinator (Brain Health Now)
(514)-524-3642 x273
Laurence.Desjardins@lactuel.ca

Laurence Desjardins
Research Coordinator (Brain Health Now)
(514)-524-3642 x273
Laurence.Desjardins@lactuel.ca

Laurence Desjardins
Research Coordinator (Brain Health Now)
(514)-524-3642 x273
Laurence.Desjardins@lactuel.ca

Laurence Desjardins
Research Coordinator (Brain Health Now)
(514)-524-3642 x273
Laurence.Desjardins@lactuel.ca

Laurence Desjardins
Research Coordinator (Brain Health Now)
(514)-524-3642 x273
Laurence.Desjardins@lactuel.ca

Laurence Desjardins
Research Coordinator (Brain Health Now)
(514)-524-3642 x273
Laurence.Desjardins@lactuel.ca

Laurence Desjardins
Research Coordinator (Brain Health Now)
(514)-524-3642 x273
Laurence.Desjardins@lactuel.ca